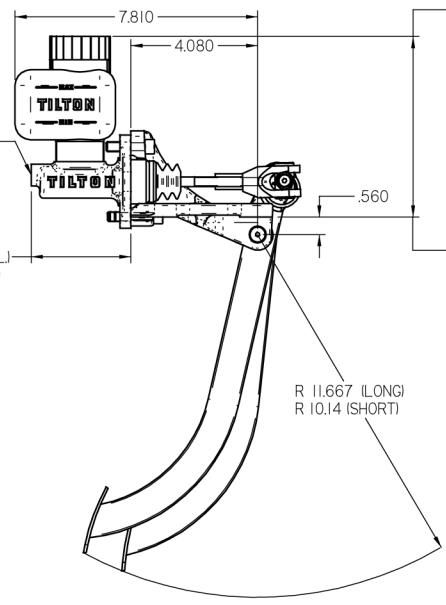


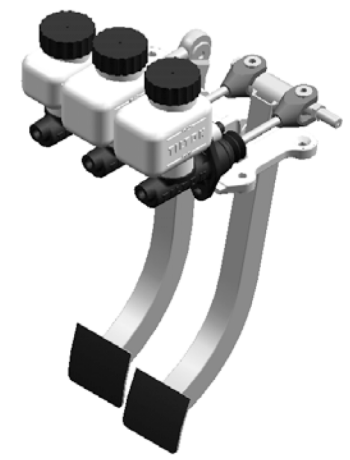
75-SERIES MASTER CYL. WITH MEDIUM RESERVOIRS

3.210 (75-SERIES MASTER CYL.)  
5.61 (74-SERIES MASTER CYL.)

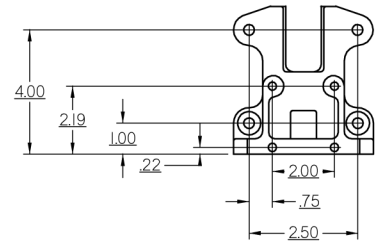


75-SERIES MASTER CYL.  
5.810 (5/8 TO 3/4 BORE)  
5.91 (13/16 TO 1 1/8 BORE)

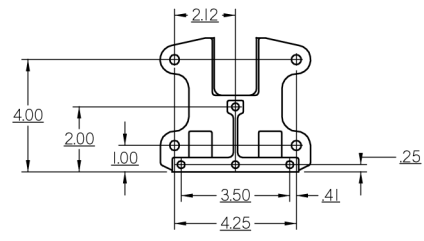
74-SERIES MASTER CYL.  
6.06 (5/8 TO 3/4 BORE)  
6.25 (13/16 TO 1 1/8 BORE)



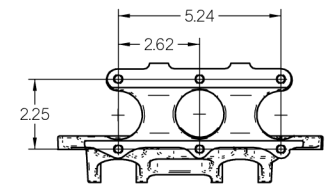
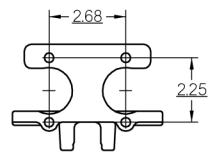
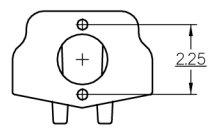
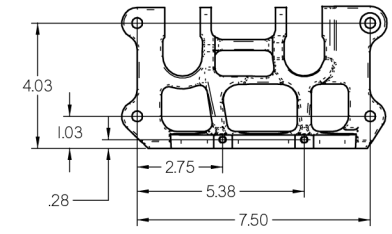
1 PEDAL, 1 MASTER CYLINDER PEDAL ASSEMBLY



1 PEDAL, 2 MASTER CYLINDERS PEDAL ASSEMBLY



2 PEDALS, 3 MASTER CYLINDERS PEDAL ASSEMBLY



- NOTES:
- UNLESS SPECIFIED OTHERWISE DIMENSIONS ARE IN INCHES.
  - DIMENSIONS ARE NOMINAL.
  - PIN 72-620 SHOWN.
  - PEDALS AVAILABLE IN EITHER STEEL (SHOWN) OR ALUMINUM, AND EITHER 5.5 : 1 OR 8.2 : 1 RATIOS (6.2 : 1 SHOWN).

**5. MASTER CYLINDERS ARE NOT INCLUDED WITH PEDAL ASSEMBLIES.**

TILTON ENGINEERING, INC.		(805)688-2353 FAX (805)688-2745	
25 EASY STREET P.O. BOX 1787		BUJELLTON, CALIFORNIA 93427 USA	
TITLE: OVERHUNG MOUNT PEDAL ASSEMBLY WITH STEEL BRAKE AND CLUTCH PEDALS			
DRN BY ROBINSON	CHK'D	SCALE 1 : 2	DWG
P/N SEE NOTES	DATE 07/26/02	SHEET 1 OF 1	